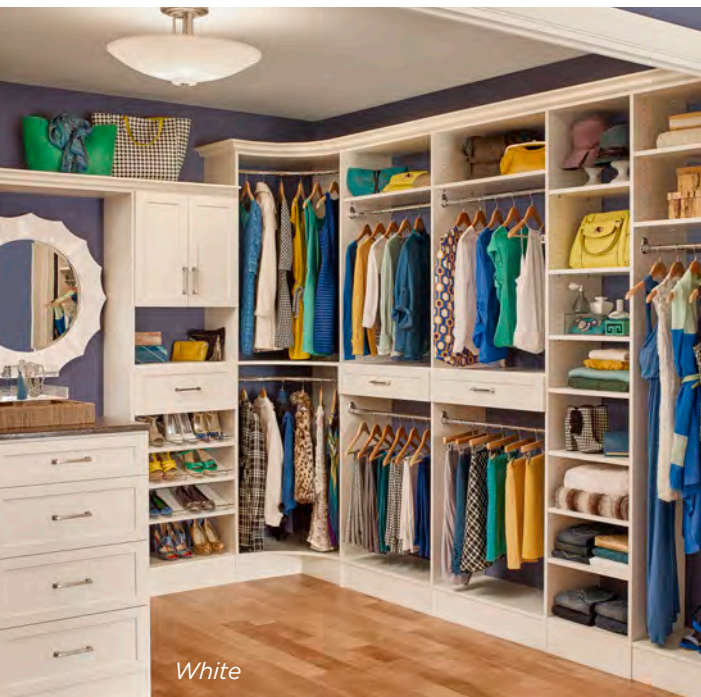


# Master *Suite*<sup>®</sup>

Premium laminate  
closet and  
storage system



 **CLOSETMAID<sup>®</sup>**



# Achieve the look of custom luxury for a lot less

MasterSuite® is ClosetMaid's top of the line closet and storage system. Manufactured from a combination of robust industrial grade engineered wood with a highly durable melamine finish and solid wood drawers, MasterSuite is built for lasting luxury. The system provides almost limitless configurations of shelves, cabinets, drawers, hang rods and more, accommodating any functional requirement in virtually any space. Plus, MasterSuite offers a host of attractive design options and convenient accessories to meet the needs of almost any residential or commercial application where maximizing storage space is desired.

Cover Photo: **NEW** Coastal Gray



*Chocolate Pear*

## **Specifications**

- 3/4" industrial grade engineered wood, 45 lbs./ft.<sup>3</sup> density
- Thermal-fused melamine
- 1 mm PVC edge banding
- Thermal-foil doors and drawers (kitchen cabinet quality)
- Solid wood drawer box and drawer front option
- 32 hole pattern system (32 mm between holes). 5 mm hole diameter. Holes used to connect components, hardware and accessories.
- High industry ratings for tolerance, tensile strength, screw-holding capabilities and internal bonding
- 14"-deep system - All finishes
- 24"-deep system - White only
- Floor-mounted or wall-mounted installation options
- CARB Phase 2 Compliant
- Available to dealers and builders a closet at a time
- MasterSuite is available through authorized ClosetMaid dealers
- Free-replacement warranty

## PARTITIONS

- Thickness: 3/4" (19 mm)
- Edge banding: 0.04" (1 mm)
- Thermal-fused Melamine, HPL
- Wall- or Floor-Mount options

### 14" DEPTH



- Upright Panel Lengths: 85-5/8", 95-3/4"
- Hanging Panel Lengths: 24", 48", 60", 80"

### HUTCH



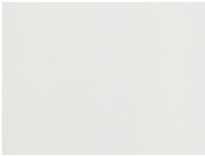
- Upright Panel Lengths: 85-5/8", 95-3/4"
- 20" deep on bottom half of panel

### 24" DEPTH



- Upright Panel Lengths: 36", 85-5/8", 95-3/4"
- Stocked in white only

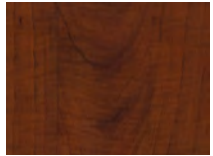
## FINISHES



White



Antique White



Warm Cognac



Chocolate Pear



Coastal Gray **NEW**

## STYLES (DOOR AND DRAWER FRONTS)



Modern **NEW**



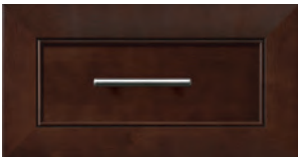
Shaker **NEW**



Traditional Raised Panel **NEW**



Raised Panel



Solid Wood

## FINISH/STYLE AVAILABILITY

### Door and Drawer Front Styles

	Modern	Shaker	Traditional Raised Panel	Raised Panel	Solid Wood
White	■	■	■	■	
Antique White		■	■	■	■*
Chocolate Pear	■	■	■	■	■*
Coastal Gray	■	■			
Warm Cognac				■	■*

\*Available in drawer fronts only

## HARDWARE OPTIONS



**Arched**  
96 mm  
(Oil-Rubbed Bronze)



**Crescent**  
96 mm (Chrome)



**Knob**  
(Satin Nickel)



**Casual *NEW***  
128 mm  
(Satin Nickel)



**Modern *NEW***  
128 mm  
(Satin Nickel)



**Rustic *NEW***  
128 mm  
(Satin Nickel)



**Traditional *NEW***  
128 mm  
(Satin Nickel)



**Stainless Steel Bar**  
96 mm  
(Stainless Steel)



**Steel Bow**  
96 mm  
(Chrome)

## DRAWER FRONTS

- Modern, Shaker, Traditional Raised Panel and Raised Panel: Thermal-foil MDF, 3/4" thick
- Solid Wood: Maple, 3/4" (19 mm) thick, mitered edges
- Pre-marked for knob, 96 mm and 128 mm handles

## DOORS

- Modern, Shaker, Traditional Raised Panel, and Raised Panel: Thermal-foil MDF, 3/4" thick
- Soft-close hinges

## DRAWER BOXES

- Height: 6", 10" | Width: 18", 24", 30" | Depth: 14", 18"
- Solid wood option: 5/8" (16 mm) thick sides, 3/8" (9 mm) birch veneer bottom, soft-closing full-extension glides
- Thermal-foil MDF option: White, full-extension glides

## SHELVES

- Thickness: 3/4" (19 mm)
- Edgbanding: 0.04" (1 mm)
- Thermal-fused Melamine, HPL
- Available as fixed cam or adjustable
- Depth: 14", 24" | Width: 18", 24", 30", 96"

## HANG RODS

- 1" (25 mm) diameter, 20 ga tubular steel
- Chrome, oil-rubbed bronze, or white (epoxy) finish

## ACCESSORIES



**Belt rack**



**Valet rod**



**Corner hang rod**



**Wire drawer**



**Hamper**



**Shoe fence**



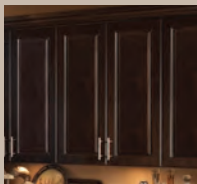
**Jewelry tray**



**Top shelf**



**Hang rod**



**Doors**



**Bench**



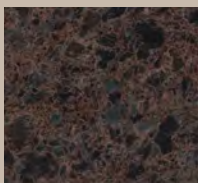
**Tie rack**



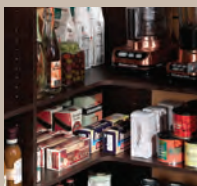
**Island**



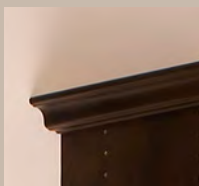
**Island top -  
Bronze**



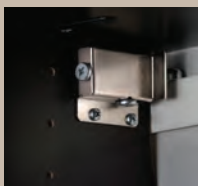
**Island top -  
Gemstone**



**Corner shelf**



**Crown molding**



**Hang rail bracket**



For more information,  
Homebuyers: [CustomClosetMaid.com](http://CustomClosetMaid.com)  
Building Professionals: [ClosetMaidPro.com](http://ClosetMaidPro.com)

 **CLOSETMAID**<sup>®</sup>

  
**EMERSON**

650 SW 27th Ave. | Ocala, Florida 34471  
1-844-795-9537

© ClosetMaid Corporation 2016 06-10007

CLOSETMAID  
CARB 93120  
Phase 2 Compliant